



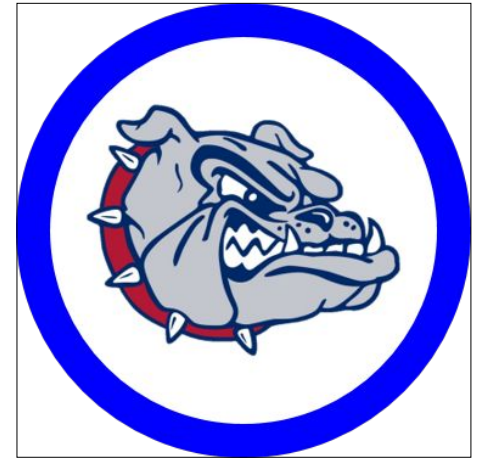
# Continuación del Programa de Inmersión en Brandywine



## TALLEY MIDDLE SCHOOL

Immersion Continuation  
2023-2024

Brandywine School District





# Ajenda

- Why continue with Immersion
  - **Por qué continuar con inmersión**
- Program structure
  - **Estructura del programa**
- About Talley
  - **Sobre Talley**
- Next Steps
  - **Pasos Siguientes**
- Q & A
  - **Preguntas y Respuestas**





# Introducciones

## Brandywine School District

**Kenny Rivera**

Assistant Superintendent

**Rebecca Reggio**

Principal, Brandywine High School

**Gianna Rivera Morales**

Spanish Immersion Coach

## Talley Middle School

**Jeffrey Lawson**, Principal

**Dionie Lum**, Assistant Principal

**Brittany Corrigan**, Assistant Principal

**Jim Fedena**, Assistant Principal

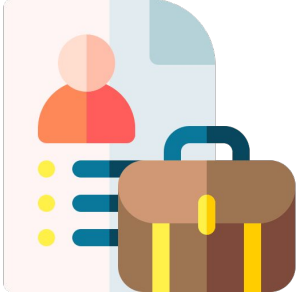
**Antonio Amores Ortiz**, Teacher

**Dulce Lopez**, Teacher

**Linsey Anderson**, Teacher



# Beneficios de Inmersión



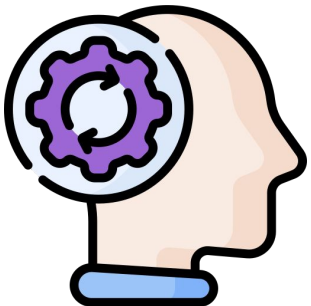
- **Economic advantages - Ventajas Económicas**

- Marketable language skills



- **Academic achievement - Logros Académicos**

- Scores as high or higher than monolingual peers
- Achievement-gap closures among minority populations




- **Cognitive benefits - Beneficios Cognitivos**

- Increased flexibility and focus
- Superior problem-solving skills





- 
- A pyramid diagram representing the ACTFL Distinguished Scale. The pyramid is divided into 11 horizontal sections, each with a specific color and label. From top to bottom, the sections are: Superior (yellow), Advanced High (light yellow), Advanced Mid (light orange), Advanced Low (orange), Intermediate High (light green), Intermediate Mid (green), Intermediate Low (light blue), Novice High (blue), Novice Mid (dark blue), Novice Low (very dark blue), and Distinguished (white, at the top). The labels are positioned to the right of the pyramid.
- | Section | Color          | Label             |
|---------|----------------|-------------------|
| 1       | Yellow         | SUPERIOR          |
| 2       | Light Yellow   | ADVANCED HIGH     |
| 3       | Light Orange   | ADVANCED MID      |
| 4       | Orange         | ADVANCED LOW      |
| 5       | Light Green    | INTERMEDIATE HIGH |
| 6       | Green          | INTERMEDIATE MID  |
| 7       | Light Blue     | INTERMEDIATE LOW  |
| 8       | Blue           | NOVICE HIGH       |
| 9       | Dark Blue      | NOVICE MID        |
| 10      | Very Dark Blue | NOVICE LOW        |
| 11      | White          | DISTINGUISHED     |
-  **ACTFL**



## Areas to strengthen?





# Immersion Continuation Model

Students will have the traditional BSD middle school class schedule **Tendrán un horario tradicional para la escuela intermedia**

- Some electives are only semester long
- Both immersion classes are year long.

Immersion classes will take place in:

- **Spanish Language Arts (SLA)/ Lengua española**
- **Social Studies / Estudios Sociales** (following the traditional State of DE and BSD curriculum in Social Studies)

|                 |   |
|-----------------|---|
| 7:40            | Teacher Arrival                         |
| 7:40 – 7:55     | Start of Day                            |
| 7:55 – 8:10     | Student Arrival                         |
| 8:10 – 9:05     | (55 minutes)                            |
| 9:10 – 10:00    | (50 minutes)                            |
| 10:05 – 10:55   | (50 minutes)                            |
| A Lunch         |   |
| - 11:00 – 11:35 | A lunch (35 minutes)                    |
| - 11:40 – 12:55 | Class (75 minutes)                      |
| B Lunch         |   |
| - 11:00 – 11:40 | Class (75 minutes)                      |
| - 11:40 – 12:15 | B lunch (35 minutes)                    |
| - 12:20 – 12:55 | Class                                   |
| C Lunch         |   |
| - 11:00 -12:20  | Class (80 minutes)                      |
| - 12:20 – 12:55 | Lunch (35 minutes)                      |
| 1:00 – 1:50     | (50 minutes)                            |
| 1:55 – 2:45     | (50 minutes) Walker/car rider dismissal |
| 2:55            | Bus Dismissal                           |
| 2:55 – 3:10     | End of Day                              |



## Instructional Split: Middle School (6-8)

Target Language Literacy /  
Language Arts (45 minutes)

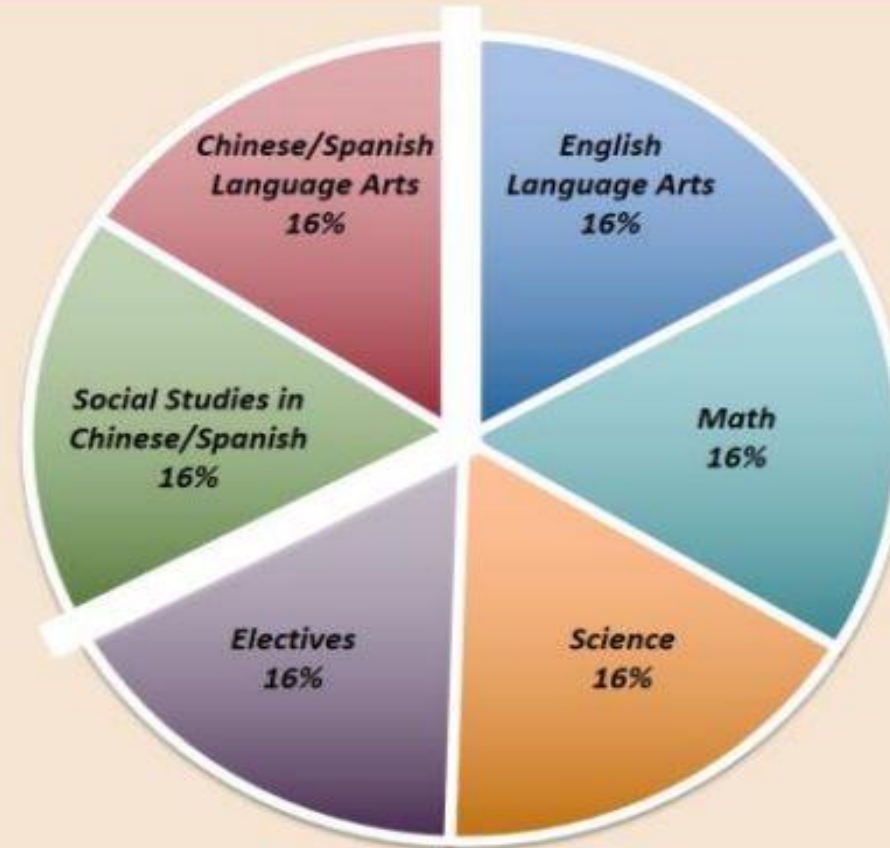
Social Studies in Target  
Language (45 minutes)

English Language Arts  
(45 minutes)

Math  
(45 minutes)

Science  
(45 minutes)

Electives  
(45 minutes)







# FAQs: School Choice & IB

**Talley is not my attendance zone/feeder school. Do I need to apply for School Choice during Open Enrollment?**

**No – regardless of your address, all BSD elementary Immersion students may remain in the program at Talley Middle School.**

**Will BSD transportation be provided for my child?**

**BSD attempts to provide all choice students us transportation at the nearest feeder bus stop to your house. Families need to contact the BSD Transportation office.**

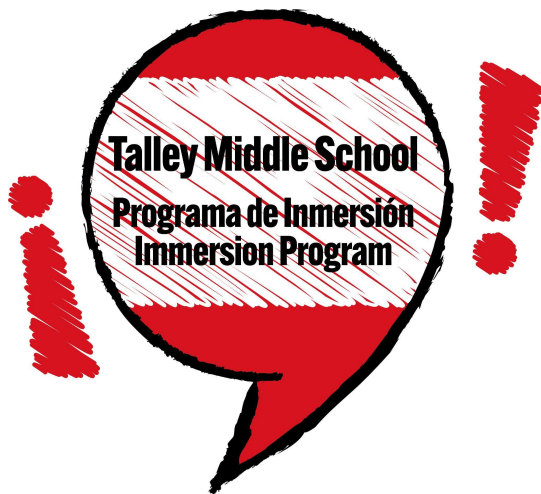
**Can my child participate in IB, AVID, Band and/or Chorus in the Immersion Program?**

**Yes! Many Immersion students participate in these programs. The IB and Immersion philosophies are closely aligned.**





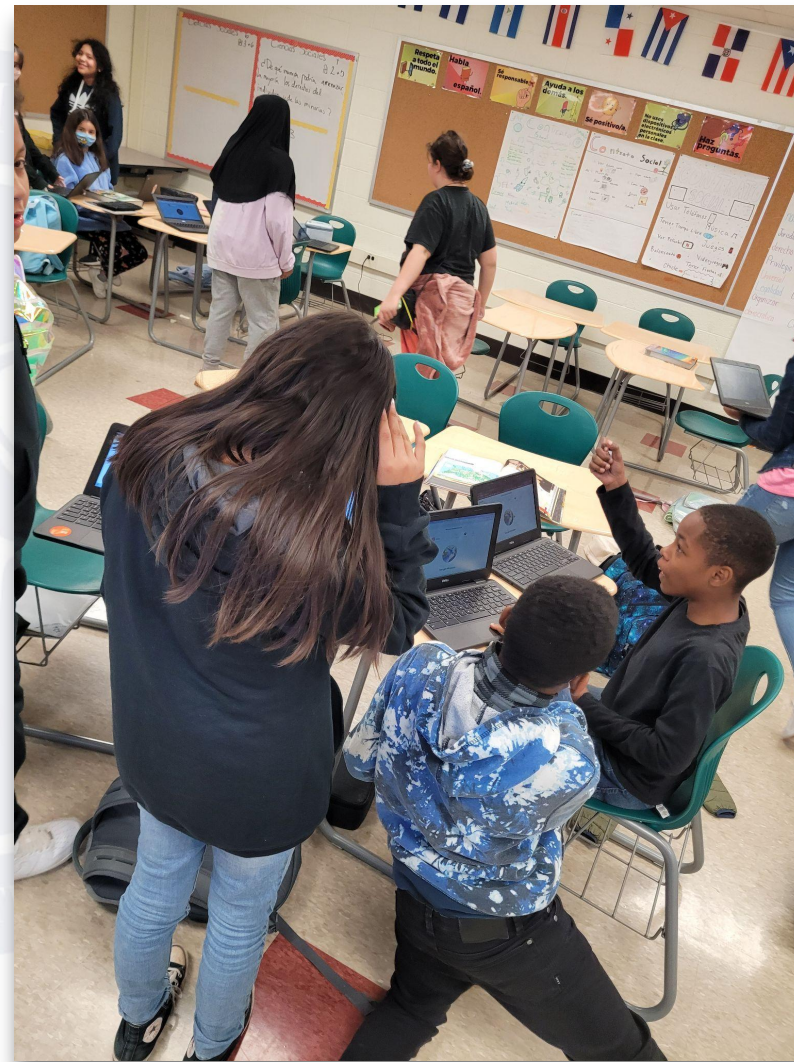
# Talley Middle School







# Transición a Talley







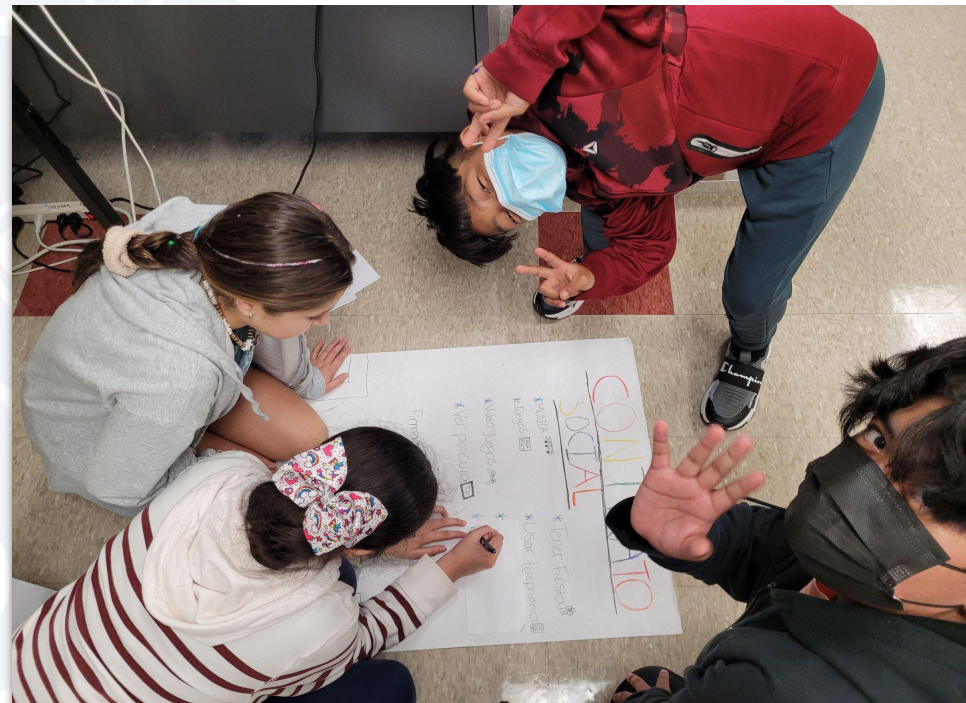
# Transición a Talley







# Transición a Talley





# VISIÓN Y MISIÓN

## Vision

**Talley Middle School pursues academic excellence and cultivates leaders for a diverse global community.**

## Mission

**Challenging students to grow academically and personally by knowing their name and need.**



# Superstars in Education

**Superstars in Education is charged with recognizing outstanding educational programs and individual achievements.**



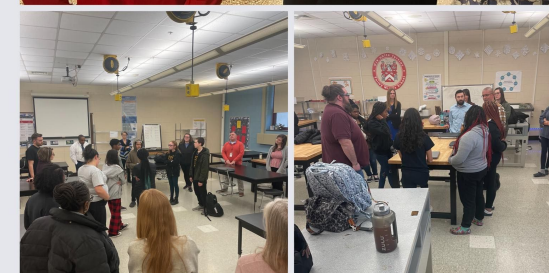
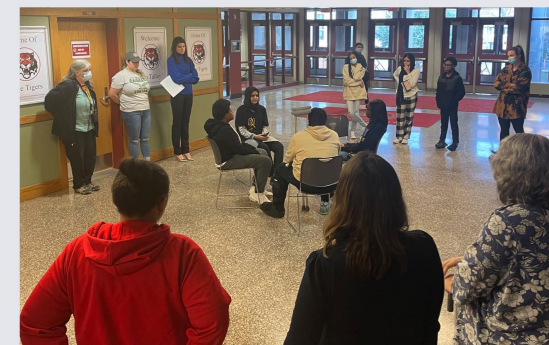




# Delaware Positive Behavior Support Project Winners

**The Delaware Positive Behavior Support Project (DE-PBS) offers annual recognition to schools that exemplify specific components of the DE-PBS Key Features.**

**Talley Middle School has received this award for the last 8 years for our work with Multi Tiered Support Systems**







# Talley Tigers LEAD

**L**earners  
**E**ngaged  
**A**ccepting  
**D**etermined







# Talley Middle School's MTSS Incentives







# Programs, Clubs, Sports

- **Academic - Los Académicos**

- AVID - Advancement Via Individual Determination
- IB - International Baccalaureate



- **Clubs - Los Clubes**

- Many Club Options



- **Sports - Los Deportes**

- Sports for three seasons





# Programs, Clubs, Sports

- Basketball club
- Business Professionals of America
- Art Club
- Chess Club
- Yearbook Club
- Student council
- Chorus
- Drama club
- FCCLA - FCCLA family, professional and community leadership organization.
- National Junior Honor Society
- Technology Student Association
- Rainbow Alliance







# Dale Farmer Award Sportsmanship Award

The Dale Farmer award recognizes those member schools who embrace the DIAA philosophy and incorporate “Education through Athletics” throughout their athletic programs. I am pleased to recognize those educational institutions that embrace and teach sportsmanship,”

Talley is the only comprehensive middle school to be awarded this award in the state of Delaware for the last two years.





# Programs, Clubs, Sports

## Fall Sports-September to November

- Girls Field Hockey
- Boys Soccer
- Girls Volleyball
- Cross Country

## Spring Sports-March to May

- Baseball
- Softball
- Tennis
- Girls Soccer

## Winter sports-November to February

- Boys and Girls Basketball
- Cheerleaders
- Wrestling





# Next Steps for the Immersion Continuation Program...

- **Continuation Verification**
  - *Conducted by Elementary in the Spring*
- **Think about the other programs  
you want to join**
  - Clubs, Sports
  - Music, AVID, IB

## Los Pasos Siguientes

...Completar la  
**verificación de  
continuación** en la  
primavera (conducida  
por Claymont)



# Questions? / ¿Preguntas?

- Are there any questions about the Immersion Continuation Program at Talley Middle School?
- ¿Hay preguntas sobre el programa de Continuación de Inmersión en Talley Middle School?

Email any  
time with  
questions.

School questions:  
[jeffrey.lawson@bsd.k12.de.us](mailto:jeffrey.lawson@bsd.k12.de.us)

Instruction questions:  
[antonio.amores-ortiz@bsd.k12.de.us](mailto:antonio.amores-ortiz@bsd.k12.de.us)

302.475.3976

302.475.3976